

How Lovely Was The Morning

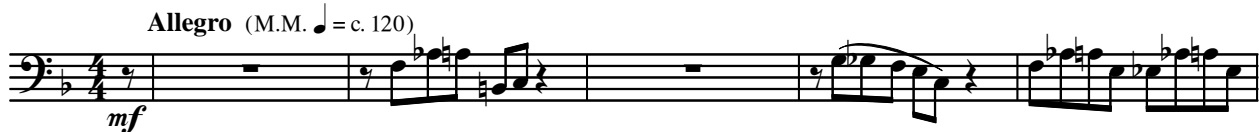
II. Joseph's Song (Father Help Me Walk With Thee)

Cello

ed robbins

Allegro (M.M. ♩ = c. 120)

Cello



Father Help Me Walk With Thee

100

Vc.

Measure 100: A single staff in bass clef with a key signature of two sharps (F# and C#). The melody consists of eighth and quarter notes, starting on a whole note G2 and moving through various intervals.

103

Vc.

105

Measures 103-105: A single staff in bass clef with a key signature of two sharps. Measure 103 starts with a 7/8 time signature. Measure 104 has a dynamic marking of *f*. Measure 105 is boxed and contains a key signature change to one sharp (F#).

107

Vc.

Measure 107: A single staff in bass clef with a key signature of one sharp (F#). The melody continues with eighth and quarter notes, including a dynamic marking of *p*.

111

Vc.

Measure 111: A single staff in bass clef with a key signature of one sharp (F#). The melody concludes with a half note and a whole note, ending with a fermata over the final note.